

FOR IMMEDIATE RELEASE

December 16, 2009

No. 39/09-10

MEDIA CONTACT:

Mary M. Feder, Director of College Relations
Suffolk County Community College
(631) 451-4256
federem@sunysuffolk.edu

**SUFFOLK COUNTY COMMUNITY COLLEGE PRESENTS
LOCKS IN TRANSLATION, CURATED BY JOANNE MCFARLAND, ON THE
MICHAEL J. GRANT CAMPUS FROM FEBRUARY 10 – MARCH 10, 2010**

Brentwood, NY – Gallery West, located in the Captree Commons Building on the Michael J. Grant Campus of Suffolk County Community College in Brentwood, is pleased to present *Locks In Translation*, a group exhibition curated by painter and poet JoAnne McFarland, beginning on February 10, 2010 and continuing through March 10, 2010.

Through *Locks in Translation* a diverse group of artists explores the complex issue of hair. Curator JoAnne McFarland has chosen works that highlight the admiration and envy that flows between women when it comes to hair, resulting in a tangled intimacy—at once deep and sustained. Exhibiting artists include: poet Elizabeth Alexander and visual artists Emma Amos; Susan Bee; Rachel Eliza Griffiths; Kenyatta Hinkle; Jee Hwang; Carolyn Martin; Ann Pachner; Annette Rusin; Barbara Siegel; Lorna Simpson, and Hong Zhang. Each of the artists selected for the exhibition is a master at her craft with a style that has become a physical attribute, such as skin color or hair texture.

In *Locks in Translation* these artists look deeply at each other, sometimes obliquely, sometimes directly, across disparate cultures, classes, ages, and dispositions. At the heart of their subversive exchange pulses the desire to unlock creative potential. Each explores hair as talisman, tease, and thorn with verve and vigor. The result is a provocative mix of observations.

JoAnne McFarland is an artist working in the Gowanus area of Brooklyn. Her most recent poetry collection, *Acid Rain*, received Honorable Mention in the inaugural 2009 Cave Canem Northwestern University Press Second Book Award. Her artwork is part of many private and public collections, including the Library of Congress and the Columbus Museum of Art.

A reception, open to the public, will be held on Wednesday, February 10, at 11:00 a.m., with light refreshments served.

Gallery hours are Monday through Thursday from 10:00 a.m. - 7:00 p.m. and Friday from 10:00 a.m. - 2:00 p.m. Directions to the Michael J. Grant Campus: Take the Long Island Expressway to Exit 53. Follow signs to Wicks Road. Go south ½ mile on Wicks Road to the Campus entrance on the right-hand side. For additional information, please call 548-2559.

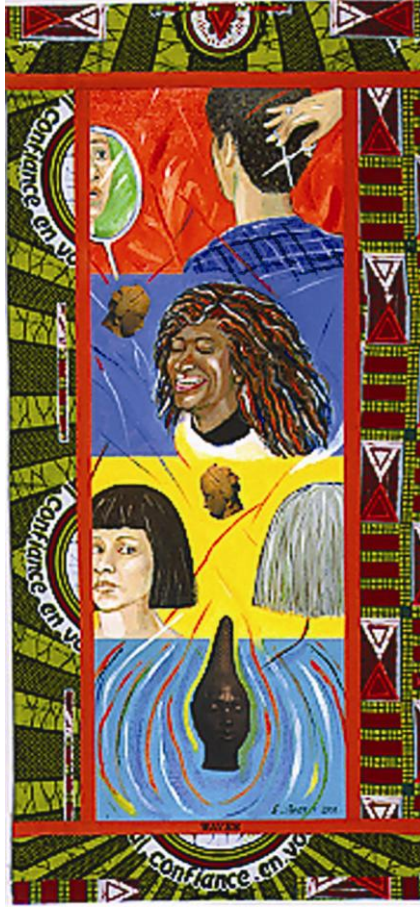


Photo Caption: Emma Amos' *Waves*, is one of the pieces that will be displayed in *Locks in Transition* at the Gallery West on the Michael J. Grant Campus of Suffolk County Community College.

About Suffolk County Community College

Suffolk County Community College (SCCC) is the largest community college in the State University of New York (SUNY) system, enrolling approximately 25,000 students at its three campuses in Selden, Brentwood and Riverhead. SCCC offers the Associate in Arts (A.A.), Associate in Science (A.S.), and Associate in Applied Science (A.A.S.) degrees, as well as a variety of certificate programs. Offering the lowest college tuition on Long Island, a highly respected Honors program, extensive extracurricular activities, championship athletic teams, and numerous unified transfer programs, SCCC is a first-choice college for Long Island students. Visit us online at sunysuffolk.edu.

###